

GL2411AP

Access Point

Version:1.0 Date:2000/10/04

FCC Information

This equipment has been tested and found to comply with the limits for a Class A digital device pursuant to part 15 of the FCC Rules. These limits are designed to provide reasonable protection against harmful interference when the equipment is operated in a commercial environment.

This equipment generates, uses, and can radiate radio frequency energy and, if not installed and used in accordance with the instruction manual, may cause harmful interference to radio communication.

Operation of this equipment in residential area is likely to cause harmful interference in which case the user will be required to correct the interference at this own expense.

The user should not modify or change this equipment without written approval of the company. Modification could make invalid any authority to use this equipment.

It is unsafe to work under circumstances in which the RF exposure exceeds recommended amount. To prevent the situation happening, people who work with the antenna should be aware of the following rules:

1. Install the antenna so that a 6.5cm distance can be kept from the antenna.
2. While installing the antenna in the location, please do not turn on the power of the wireless card.
3. While the device is working, please do not contact the antenna.

This device complies with Part 15 FCC Rules. Operation is subject to the following two conditions: (1) This device may not cause harmful interference. (2) This device must accept any interference received including interference that may cause undesired operation."

Contents

SECTION 1 ABOUT GL2411AP-0A ACCESS POINT.....	3
INTRODUCTION	3
1-1 FEATURES.....	3
1-2 FIRMWARE FUNCTIONALITY	3
1-3 APPLICATIONS.....	4
1-4 PRODUCT KIT.....	4
SECTION 2 HARDWARE INSTALLATION.....	6
2-1 EQUIPMENT REQUIREMENT	6
2-2 GL2411AP-0A HARDWARE INSTALLATION.....	6
2-3 SOFTWARE LIMITATION.....	6
SECTION 3 HOW TO CONFIGURE GL2411AP-0A ACCESS POINT	7
3-1 INSTALLTION GL2411AP-0A AP BY USB CABLE FOR WINDOWS 98	7
3-2 GL2411AP-0A AP UTILITY SETUP.....	10
<i>DFU (USB Configuration Utility)</i>	10
<i>SNMP Configuration Utility</i>	12
3-3 GL2411AP-0A AP CONFIGURATION UTILITY	14
<i>DFU (USB Configuration Utility)</i>	14
<i>SNMP Configuration Utility</i>	16
APPENDIX A NETWORK CONFIGURATION.....	19
A-1 NETWORK TOPOLOGY.....	19
<i>Ad-Hoc Mode</i>	19
<i>Infrastructure</i>	19
A-2 ROAMING	20
APPENDIX B SPECIFICATIONS	21
APPENDIX C GLOSSARY	22

Section 1 About GL2411AP-0A Access Point

Introduction

The GL2411AP-0A (11 Mbps WLAN Access Point) is a long-range, high performance LAN product, which provides Access Point services to a 2,4 GHz RF network and bridges to an Ethernet backbone. The design of this product is based on AT76C510 (bridge-on-a-chip) module, a highly integrated ASIC designed to combine legacy LANs with wireless LANs. AT76C510 performs all the necessary inter-networking and bridging functions. It receives data from both networks, stores them locally for further processing, installs and maintains connections and transmits the packets to the proper destination. Furthermore, AT76C510 interfaces three more modules, the Ethernet PHY, the wireless PHY and the RAM modules, for allowing compact system implementation and flexibility for supporting almost all the possible physical interfaces.

1-1 Features

- Glueless connection to Intersil PRISMI, PRISMII Direct Sequence Spread Spectrum (DSSS) radio chip set. Able to communicate also with other DSSS radios
- Supports 11 Mbps rates with automatic fallback to 5.5, 2 and 1 Mbps
- WEP encryption/decryption is accomplished on the fly
- Ethernet MAC supports MII interface and 10/100Mbit speeds
- Hardware modules for Packet Filtering and statistics gathering
- Glueless SRAM, Flash interface for data buffering and program storage, supporting up to 16 MB of memory
- Integrated 2 x 6K x 32 bit internal SRAM modules for fast 32-bit program execution and temporary storage of data
- Supports 3V supply
- 128-pin PQFP, TQFP
- JTAG Boundary Scan (IEEE 1149.1) test access port for board-level production test

1-2 Firmware functionality

The firmware functionality of the bridge supports:

1. Distributed Coordination Function (DCF)
 - CSMA/CA
 - Backoff procedure

- NAV management
- ACK procedure
- Retransmission of unacknowledged frames
- 2. RTS/CTS handshake
- 3. Duplicate detection and recovery
- 4. Fragmentation and Reassembly
- 5. Beacon generation
- 6. Probe response
- 7. Wired Equivalent Privacy Algorithm (WEP)
- 8. Authentication Algorithm (Open System, Shared Key)

1-3 Applications

The Serial of LAN products offer a fast, reliable, cost-effective solution, allowing clients to wirelessly access the network in applications such as following:

1. Remote access to corporate network information

E-mail, file transfer and terminal emulation

2. Difficult-to-wire environments

Historical or old buildings, asbestos installations, and open area where wiring is difficult to employ

3. Frequently changing environments

Retailers, manufacturers and banks who frequently rearrange the workplace and change location

4. Temporary LANs for special projects or peak time

Trade shows, exhibitions and construction sites need temporary setup for a short time period. Retailers, airlines and shipping companies need additional workstations for a peak period. Auditors require workgroups at customer sites.

5. Access to database for mobile workers

Doctors, nurses, retailers, white-collar workers need access to database while being mobile in the hospital, retail store or office campus.

6. SOHO (Small Office and Home Office) users

SOHO users need easy and quick installation of a small computer network.

1-4 Product Kit

- ◆ GL2411AP-0Ax 1
- ◆ Antenna (fixed).....x 2

- ◆ **GL2411AP-0A driver and utility CD.....x 1**
- ◆ **A/C Power Adapter.....x 1**
- ◆ **USB cable.....x 1**

If any of the listed items are not included or found damaged, please contact your local dealer.

Section 2 Hardware Installation

2-1 Equipment Requirement

Installation of GL2411AP-0A requires:

1. An A/C power outlet (100~240V,50~60Hz) which will supply the power for the GL2411AP-0A Access Point
2. A 10/100 Base-T (UTP) Ethernet cable drop (RJ-45 connector)

2-2 GL2411AP-0A Hardware Installation

Please follow these procedures while setting up the hardware:

1. Site Selection

Choose a proper place for your GL2411AP-0A.

In general, the best location to place your GL2411AP-0A is the center of your wireless coverage, with line of sight to all your mobile stations.

2. Adjust the direction of the Antenna

Adjust the direction of the antenna placement to improve the GL2411AP-0A's performance. Try to place the antenna in the position which can best cover its BSS. Normally, the higher you place the antenna, the better the performance will be. The character of diversity enhances the receiving sensitivity.

3. Connect the Ethernet Cable

GL2411AP-0A can be connected to the 10/100 Base-T Ethernet network. Connect your UTP Ethernet cable to the RJ-45 connector of the GL2411AP-0A AP and connect the other side of UTP Ethernet cable to a hub.

4. Connect the Power Cable

Connect the power adapter cable to the DC5V Power Socket of the GL2411AP-0A. ONLY use the power adapter supplied with the GL2411AP-0A. Otherwise, the product may be damaged.

2-3 Software Limitation

1. DFU Software

Operation System:

Chinese Windows 98/2000/ME, English Windows 98/2000/ME

2. SNMP Software

Operation System:

English Windows 98/NT/ME

Section 3 How to Configure GL2411AP-0A Access Point

The GL2411AP-0A can be configured by DFU utility for only Windows® 98. You need plug the USB cable with the GL2411AP-0A and the USB slot of the PC to run DFU.exe for configuring the GL2411AP-0A and setting the setup.

3-1 Installation GL2411AP-0A AP by USB cable For Windows 98

1. Because the utility is only for Windows® 98 at this moment, you must boot your PC into Windows® 98.
2. Run DFUzip.exe in GL2411AP-0A Access Point driver and utility disk to decompress the files into C:\DFU.
3. Ensure you have followed the procedure as described in the previous section to finish hardware installation.
4. Plug the two sides of the USB cable into the USB slots of GL2411AP-0A and your PC.
5. Windows® 98 will automatically detect the GL2411AP-0A and prompt you to install the necessary driver.

Click “Next” to begin the installation.



6. Select “Search for the best driver...” and click “Next”.



7. Select “Specify a location” and click “Browse”. On the windows information dialog, double-click the “C:\DFU” folder icon from the list and Windows® 98 will automatically enter the path. Then click “Next”.



8. Windows® 98 will then acknowledge that it has found the appropriate driver and click "Next".

9. Windows® 98 will install the driver. As the driver files are being copied to the appropriate location, you will be prompted to insert the Windows® 98 CD.



NOTE: You must insert the Windows 98® CD as the driver installation requires special files that will not be available even if you have stored a copy of Windows® 98 source on your hard drive.

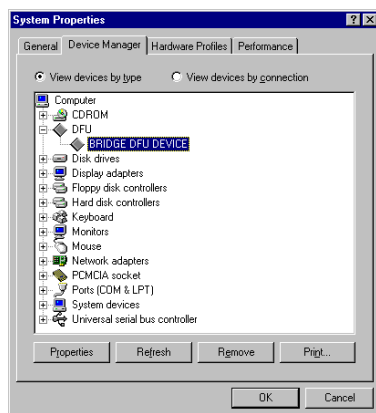
10. After Windows® 98 has finished installing the appropriate files, click “Finish”.



11. From the Control Panel, double-click the “System” icon.



12. From the “Properties” menu, please select the “Device Manager” tab. And check that the “BRIDGE DFU DEVICE” device works fine.

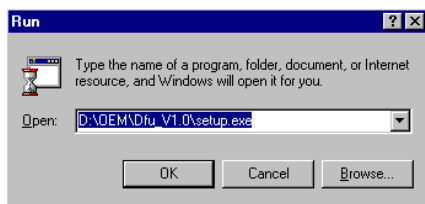


3-2 GL2411AP-0A AP Utility Setup

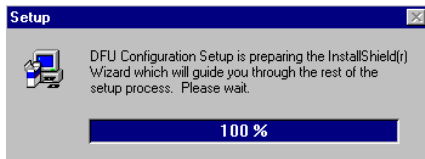
DFU (USB Configuration Utility)

To setup the utility, please click the “Start” icon and then “Run”.

1. Please type “D:\OEM\Dfu_V1.0\setup.exe.” or use browse the file in the dialog box. Then click “OK” to start the setup. (ps: D: is your CD-ROM driver)



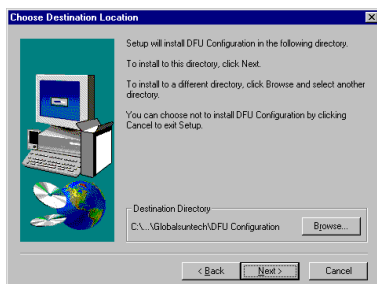
2. In Computer screen will show this dialog, please wait for screen change.



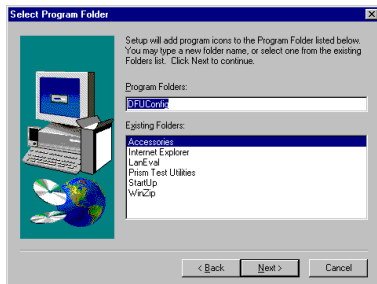
3. Please click “Next” for further running.



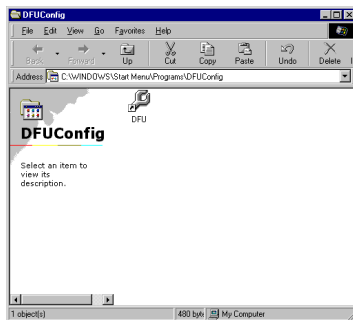
4. Please browse the file shown in the dialog box, then click “Next”



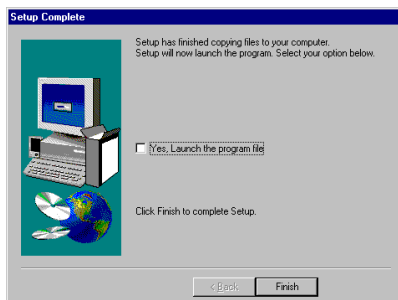
5. Setup will add program icon to the program folder shown as blow, then click “Next” for further setup.



6. Please click “DFU Config” folder for installation of USB configuration Utility.



7. After the installation of utility, please click “Finish”.



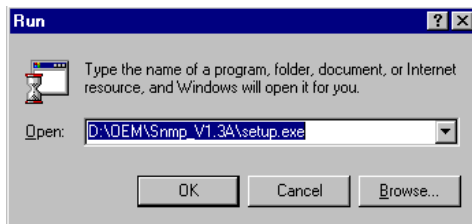
8. If you would like to configure the parameter, please click the page you want to change parameter. If not, please just click “Close” to finish the setup.



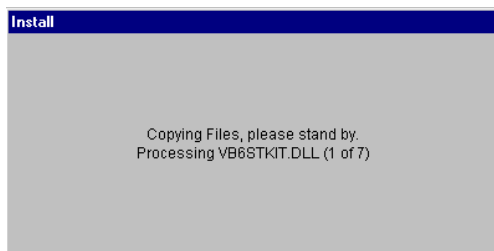
SNMP Configuration Utility

To setup the utility, please click the “Start” icon and then “Run”.

1. Please type “D:\OEM\SNMP_V1.3A\setup.exe.” or use browse to select the file in the dialog box. Then click “OK” to start the setup. (ps: D: is your CD-ROM driver)



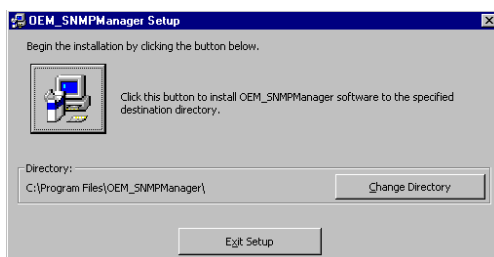
2. In Computer screen will show this dialog, please wait for screen change.



3. Please click “OK” for further running.

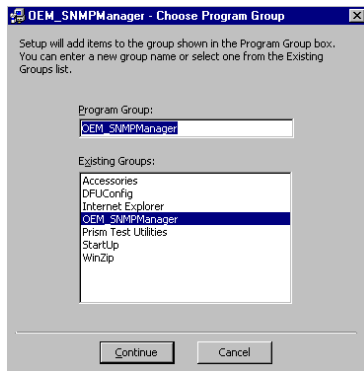


3. Please browse the file shown in the dialog box, then click the graphic icon

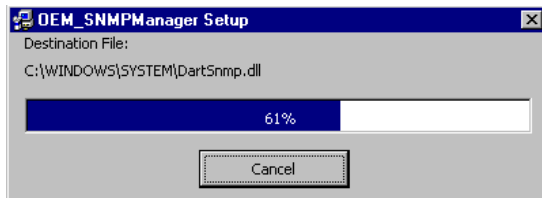


5. Please click “OEM_Manager” program Group for installation of SNMP configuration Utility.

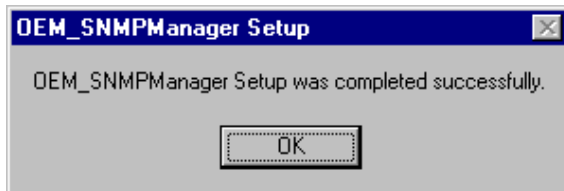
And press “Continue” Button for next step.



6. Wait for screen change.





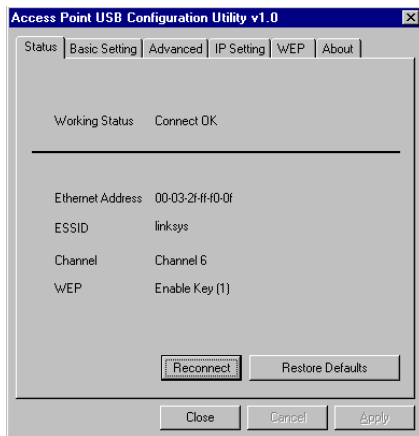
7. After the installation of utility, please click “OK”.



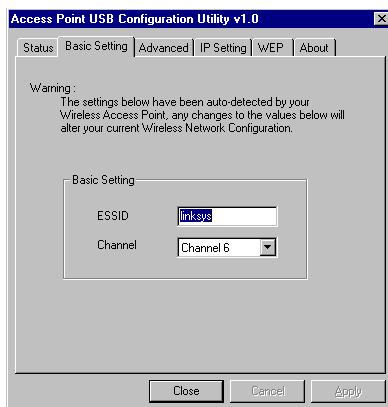
3-3 GL2411AP-0A AP Configuration Utility

DFU (USB Configuration Utility)

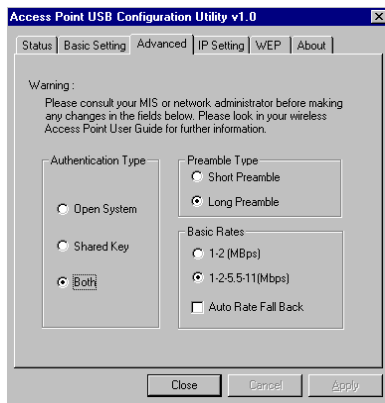
1. Click “Start” then, “Program” folder, you will find icon  
please press icon “DFU” to execute program.
2. Page “Status” will show the DFU status including “Ethernet Address”, ”ESSID”, ”Channel” and ”WEP”
Click “Reconnect” Button will reconnect AP and reread the parameter
Click “Restore Defaults” Button will restore the default value.
Click Page “Status” “Basic Setting” “Advanced” “IP Setting” “WEP” “About” to change other function.
If you had changed any configuration, click the “Apply” Button will become active.



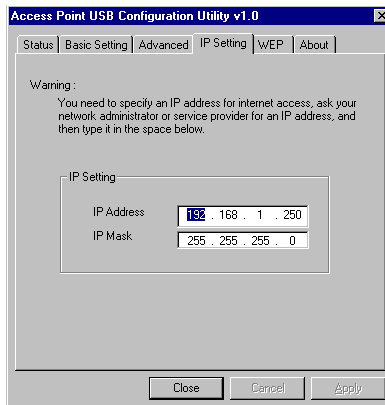
3. Page “Basic Setting”, you can change ESSID and Channel



4. Page “Advanced”, you can change “Authentication Type” “Preamble Type” and “Basic Rate”



5. Page “IP Setting”, you can change “IP Address” and “IP Mask”

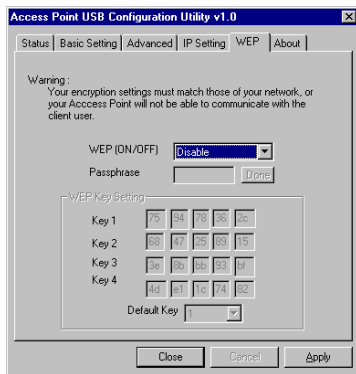


6. Page “WEP”, you can change “WEP Key Setting” if WEP is Enabled.

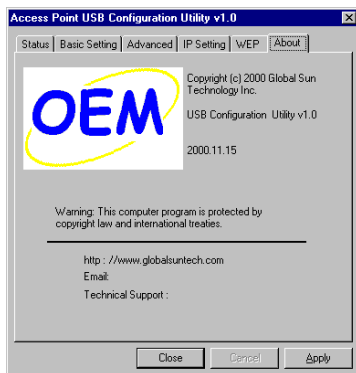
And you can use passphrase to generate the key.




7. Page “WEP”, you can not change anything if WEP is disable.



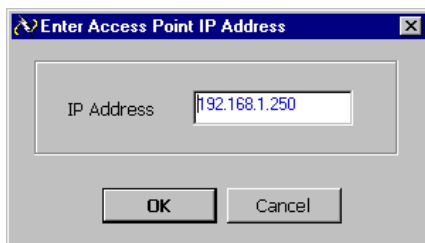
8. Page “About” is our trademark and description.



SNMP Configuration Utility

1. Click “Start” then, “Program” folder, you will find icon  OEM_SNMPManager, please press icon “OEM_SNMPManager” to execute program.

2. Please key in “IP Address” for your AP. (Default IP: 192.168.1.250)



3. Page “Status” will show the SNMP status including “Ethernet Address”, ”ESSID”, ”Channel”, ”WEP”

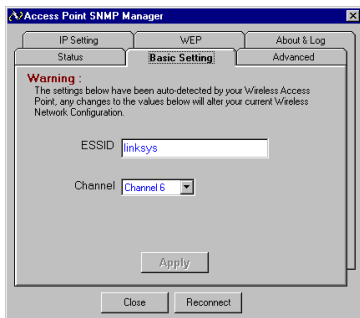
Click “Reconnect” Button will reconnect AP and reread the parameter

Click “Restore Defaults” Button will restore the default value.

Click Page “Status” “Basic Setting” “Advanced” “IP Setting” “WEP” “About” to change other function.



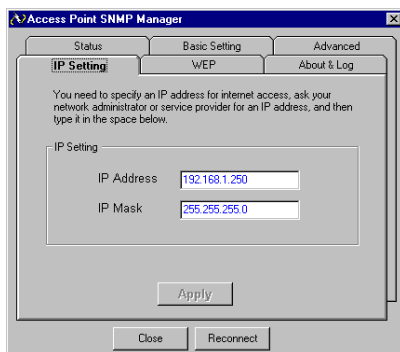
2. Page “Basic Setting”, you can change ESSID and Channel.
(The Apply button will be enabled, if you change any data on this page)



3. Page “Advanced”, you can change “Authentication Type” “Preamble Type” and “Basic Rate”
(The Apply button will be enabled, if you change any data on this page)



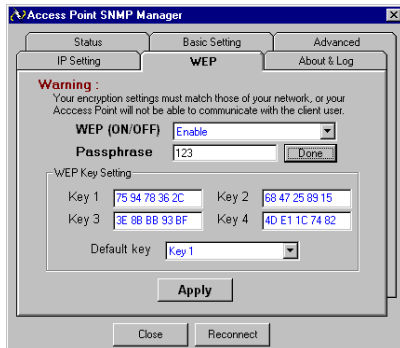
4. Page “IP Setting”, you can change “IP Address” and “IP Mask”
(The Apply button will enable if you change data on this page)



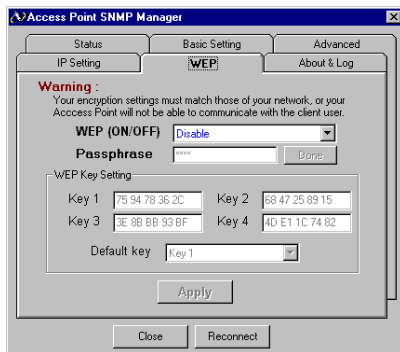
6. Page “WEP”, you can change “WEP Key Setting” if WEP is Enabled.

And you can use passphrase to generate the key.

(The Apply button will be enabled, if you change any data on this page)



7. Page “WEP”, you can not change anything, if WEP is disable.



8. Page “About” is our trademark and description.



Appendix A Network Configuration

A-1 Network Topology

Ad-Hoc Mode

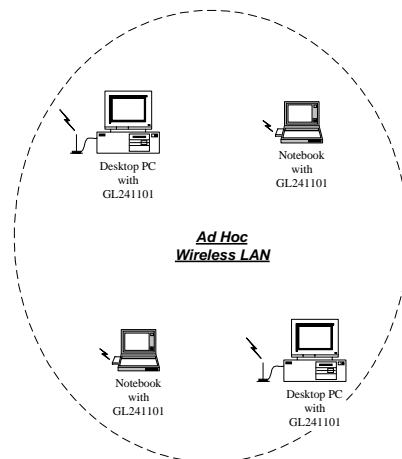


Fig. 1 - Ad-Hoc Wireless LAN

An Ad-Hoc wireless LAN is a group of computers, each equipped with one LAN adapter, connected as an independent wireless LAN. Computers in a specific Ad-Hoc wireless LAN must be configured at the same radio channel and ESSID.

Ad-Hoc wireless LAN is applicable at a departmental scale for a branch or SOHO operation.

Infrastructure

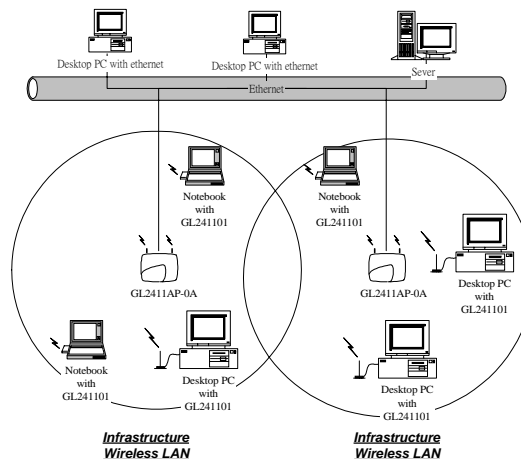


Fig. 2 An Example of Infrastructure Wireless LAN

GL2411AP-0A provides access to a wired LAN for wireless workstations. An integrated wireless and wired LAN is called an Infrastructure configuration. A group of LAN PC users and a GL2411AP-0A Access Point construct a Basic Service Set (BSS). Each LAN PC in the BSS can talk to any computer in the wired LAN infrastructure via the GL2411AP-0A Access Point. Infrastructure configuration not only extends the accessibility of a LAN PC to the wired LAN, but also doubles the effective wireless transmission range for 2 LAN PCs. Since GL2411AP-0A is able to forward data within its BSS, the effective transmission range in an infrastructure LAN is **doubled**. BSS ID is, in essence, the ID of each independent GL2411AP-0A. All LAN PCs configured without roaming options in the independent BSS must be configured with the BSS ID of the GL2411AP-0A. Infrastructure is applicable in an enterprise scale for wireless access to central databases, or wireless access for mobile workers.

A-2 Roaming

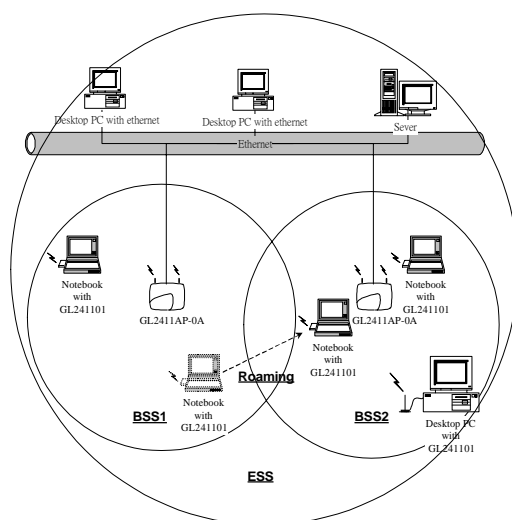


Fig. 3 Roaming in an Extended Service Set (ESS)

An Infrastructure configuration also supports roaming capability for mobile workers. More than one BSS can be configured to be an Extended Service Set (ESS). On account of a continuous connection to the network, users **within an ESS** can roam freely. All LAN PCs and GL2411AP-0As within one ESS must be configured with the same ESS ID and at the same radio channel.

Appendix B Specifications

GL2411AP-0A Access Point	
Wired Interface	Ethernet, 10/100 BaseT
Wireless Interface	IEEE 802.11b standard Wireless LAN
Frequency Band	2.412~2.462 GHz (FCC, Canada) 2.412~2.472 GHz (ETSI) 2.412~2.472 GHz (Japan STD-T66) 2.484 GHz (Japan STD-33) (Customized)
RF Technology	Spread Spectrum Direct Sequence (DSSS)
Channels	FCC : 1-11 channels ETSI : 1-13 channels Japan STD-T66 : 1-13 channels Japan STD-33 : 14 th channel only

Appendix C Glossary

Access Point — An internetworking device that seamlessly connects wired and wireless networks.

Ad-Hoc — An Ad-Hoc wireless LAN is a group of computers each with LAN adapters, connected as an independent wireless LAN.

Backbone — The core infrastructure of a network. The portion of the network transports information from one central location to another central location where it is unloaded onto a local system.

Bridge — An internetworking function that incorporates the lowest 2 layers of the OSI network protocol model.

BSS — BSS stands for “Basic Service Set”. It is an Access Point and all the LAN PCs that associated with it.

ESS — ESS stands for “Extended Service Set”. More than one BSS is configured to become Extended Service Set. LAN mobile users can roam between different BSSs in an ESS.

Ethernet — A popular local area data communications network, originally developed by Xerox Corp., that accepts transmission from computers and terminals. Ethernet operates on a 10 Mbps baseband transmission rate, using a shielded coaxial cable or over shielded twisted pair telephone wire.

Infrastructure — An integrated wireless and wired LAN is called an Infrastructure configuration.

Roaming — A LAN mobile user moves around an ESS and enjoys a continuous connection to the Infrastructure network.

RTS Threshold — Transmitters contending for the medium may not be aware of each other. RTS/CTS mechanism can solve this “ Hidden Node Problem”. If the packet size is smaller than the preset RTS Threshold size, the RTS/CTS mechanism will NOT be enabled.

DSSS — direct sequence spread spectrum

PLCP — physical layer convergence protocol

PPDU — PLCP protocol data unit

PSDU — PLCP service data unit

Ethernet Mac Address — Don’t change it, as this will disable the AP.

Ethernet IP Address and SubMask — Please setup them to match your network environment.

For example : If your IP address is 192.168.99.127 and your SubMask is 255.255.255.0. Please set the IP address of the AP to 192.168.99.xx which will not have conflict with other IP address and set the SubMask of the AP to 255.255.255.0.

Channel — The AP and the with it associated stations will work in this channel. You must set the channel by consulting Appendix B from violating the Specifications.

Basic Rate — the data rate of the AP with the value 1,2,5.5 or 11 Mbps for your selection.

ESSID — In infrastructure association , the stations will link to the AP with the same ESSID as they have.

WEP — Wired Equivalent Privacy (Wep) is an encryption scheme used to protect wireless data communication. To enable the icon will prevent other stations without the same WEP key from linking with the AP.

Preamble Type — During transmission, the PSDU shall be appended to a PLCP preamble and header to create the PPDU. Two different preambles and headers are defined : the mandatory supported long preamble and header which interoperates with the current 1 and 2 Mbit/s DSSS specification as described in IEEE Std 802.11-1999, and an optional short preamble and header. At the receiver, the PLCP preamble and header are processed to aid in demodulation and delivery of the PSDU. The optional short preamble and header is intended for application where maximum throughput is desired and interoperability with legacy and non short preamble capable equipment is not consideration. That is, it is expected to be used only in networks of like equipment that can all handle the optional mode. (IEEE 802.11b standard)

Authentication Type — Indication of an authentication algorithm which can be supported by this node:

1. Open System : Open System authentication is the simplest of the available authentication algorithms. Essentially it is a null authentication algorithm. Any station that requests authentication with this algorithm may become authenticated if dot11AuthenticationType at the recipient station is set to Open System authentication.
 2. Shared Key : Shared Key authentication supports authentication of STAs as either a member of those who know a shared secret key or a member of those who do not.
- Open System authentication is the default authentication algorithm.